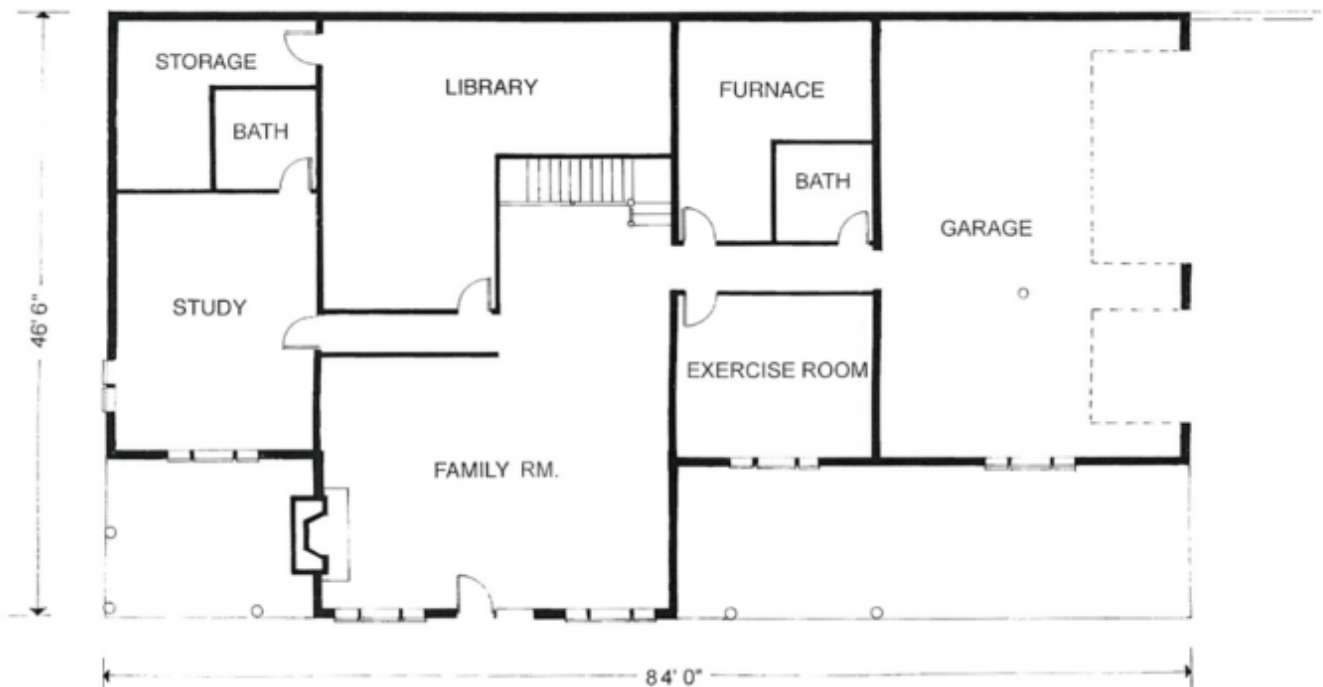
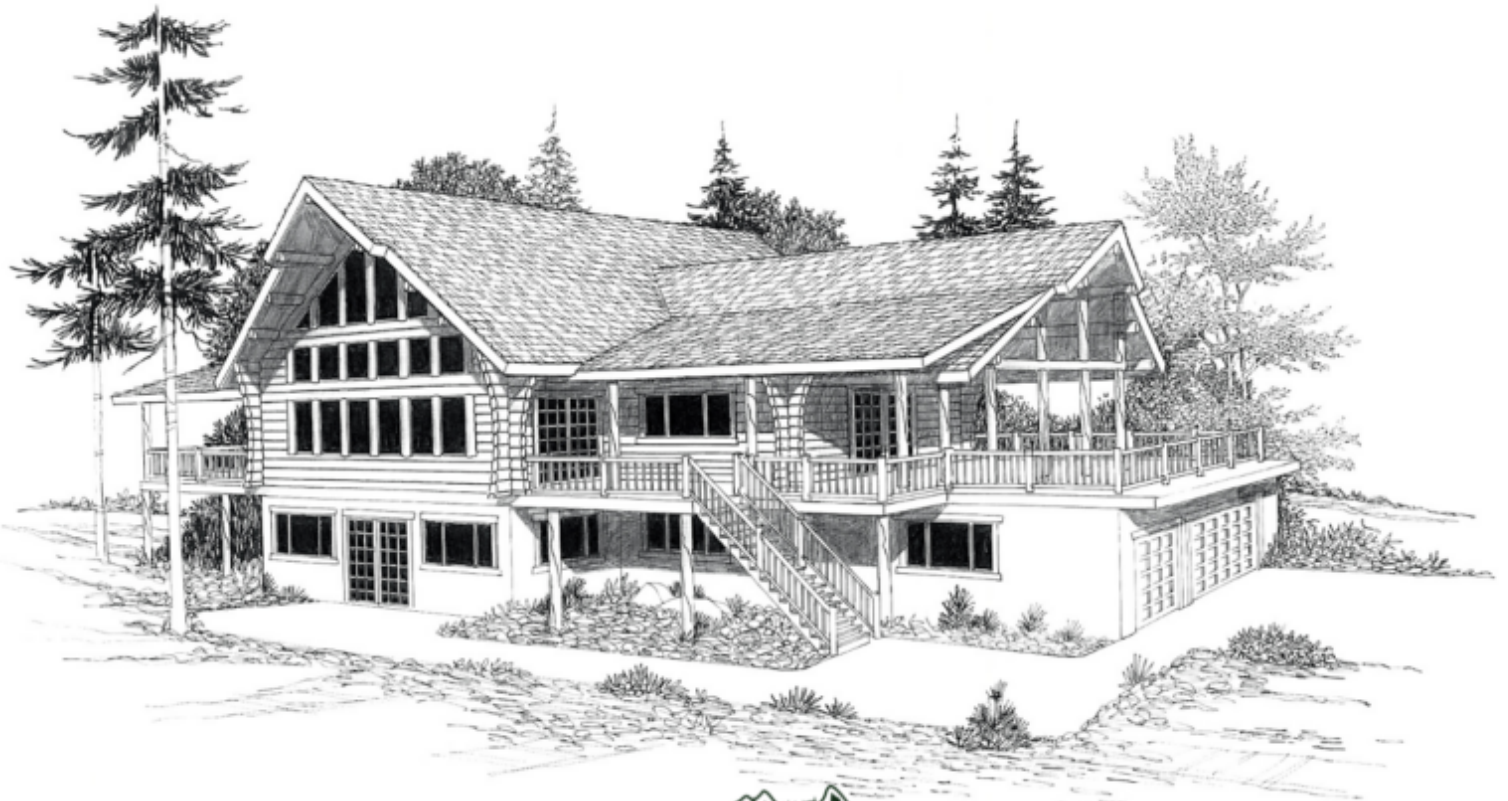


# THE SAPPHIRE



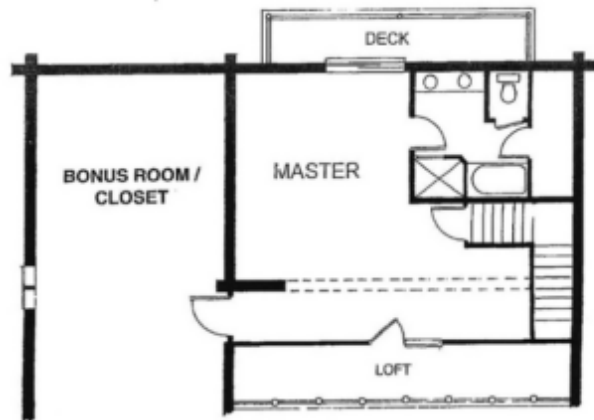
LOWER LEVEL

# THE SAPPHIRE

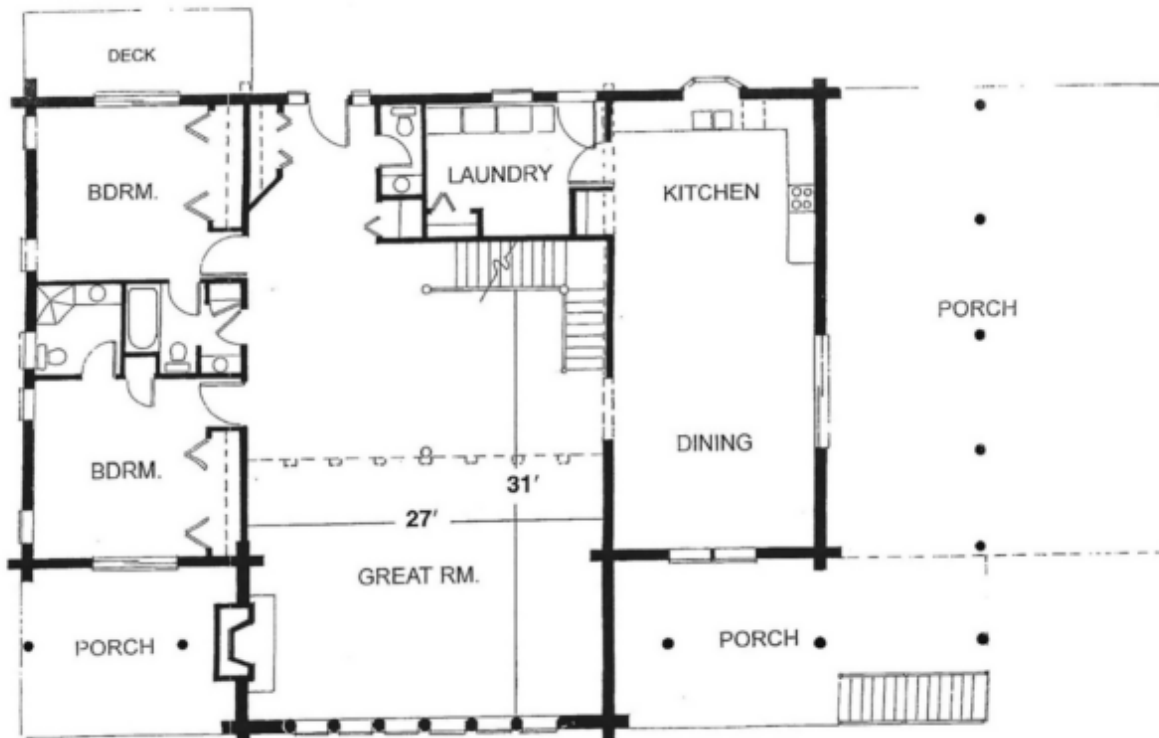
This home combines modern convenience and the appeal of natural log. Its extensive covered porch takes full advantage of the great outdoors, and with the addition of a walkout basement, the house offers more than 5000 square feet of usable space.



TOTAL LIVING AREA: 2,892 SQUARE FEET + LOWER LEVEL



UPPER LEVEL



MAIN LEVEL