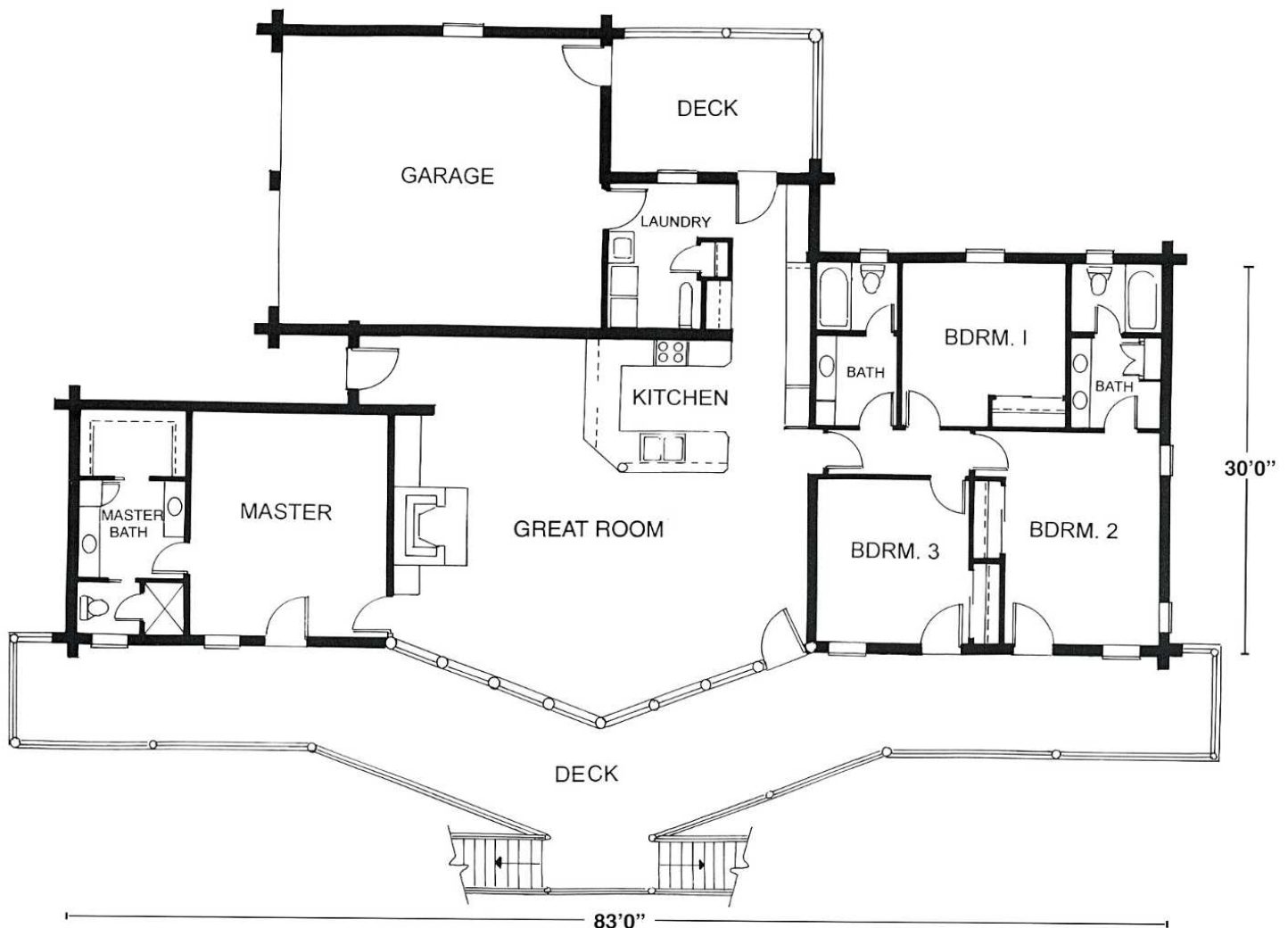


# THE ANGEL FIRE

This home's exceptional floor plan brings people together while allowing them privacy. It has a spacious, partially covered deck, plus a fireplace with a four-season view. All quarters are private, yet convenient to the kitchen, bath and laundry facilities. With the exception of the great room, all rooms have 10' ceilings. Across from the great room is the master bedroom, which accommodates a large walk-in closet, his and hers sink/vanities and privacy door leading out to the large deck.



TOTAL LIVING AREA: 2,324 SQUARE FEET.



MAIN LEVEL

# THE ANGEL FIRE

